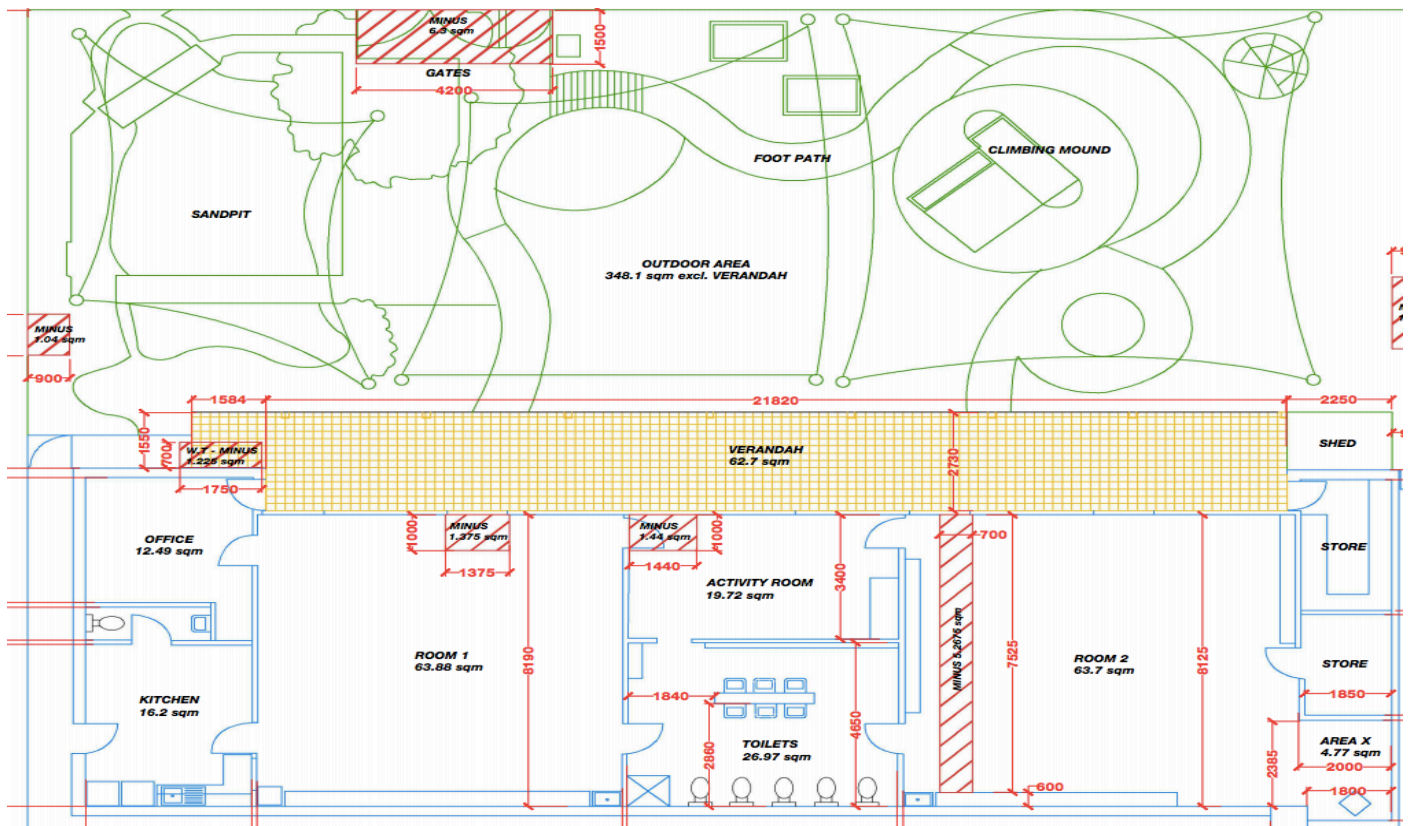




Supervision Plan

- High risk areas require an educator to be within both sight and hearing. This may vary according to the experiences set up.
- Staff must be aware of where children are at all times.
- Staff need to position themselves to be able to see or hear children using the bathroom, preferable both whenever possible.
- Staff communicate effectively with each other when leaving a room or outdoor area.
- Where possible all indoor and outdoor packing away should be gradual. E.g pack away sandpit first. This way there are sufficient educators still engaging with children while others are packing away and the routine experience is calm. We always have a classroom open when the outdoor environment is offered to ensure children can be supervised if they use the bathroom.
- Non-contact time needs to be recorded daily on the staff record and used to evaluate our supervision policy and plan.



- Staff need to be able to see and hear children using the ropes on the climbing mound.
- One staff member always needs to be supervising the sandpit and water play. See Water Policy.
- When educators are engaging with children in more in depth experiences ensure you still scan the environment and communicate to other educators when you notice children who need their support. This way you can stay engaged in your valuable experience and be a highly functioning support to the other educators who are supervising.